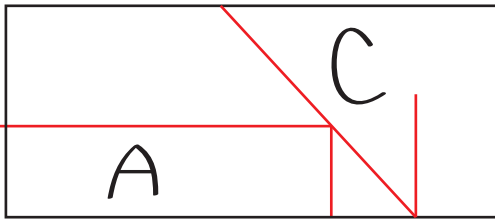
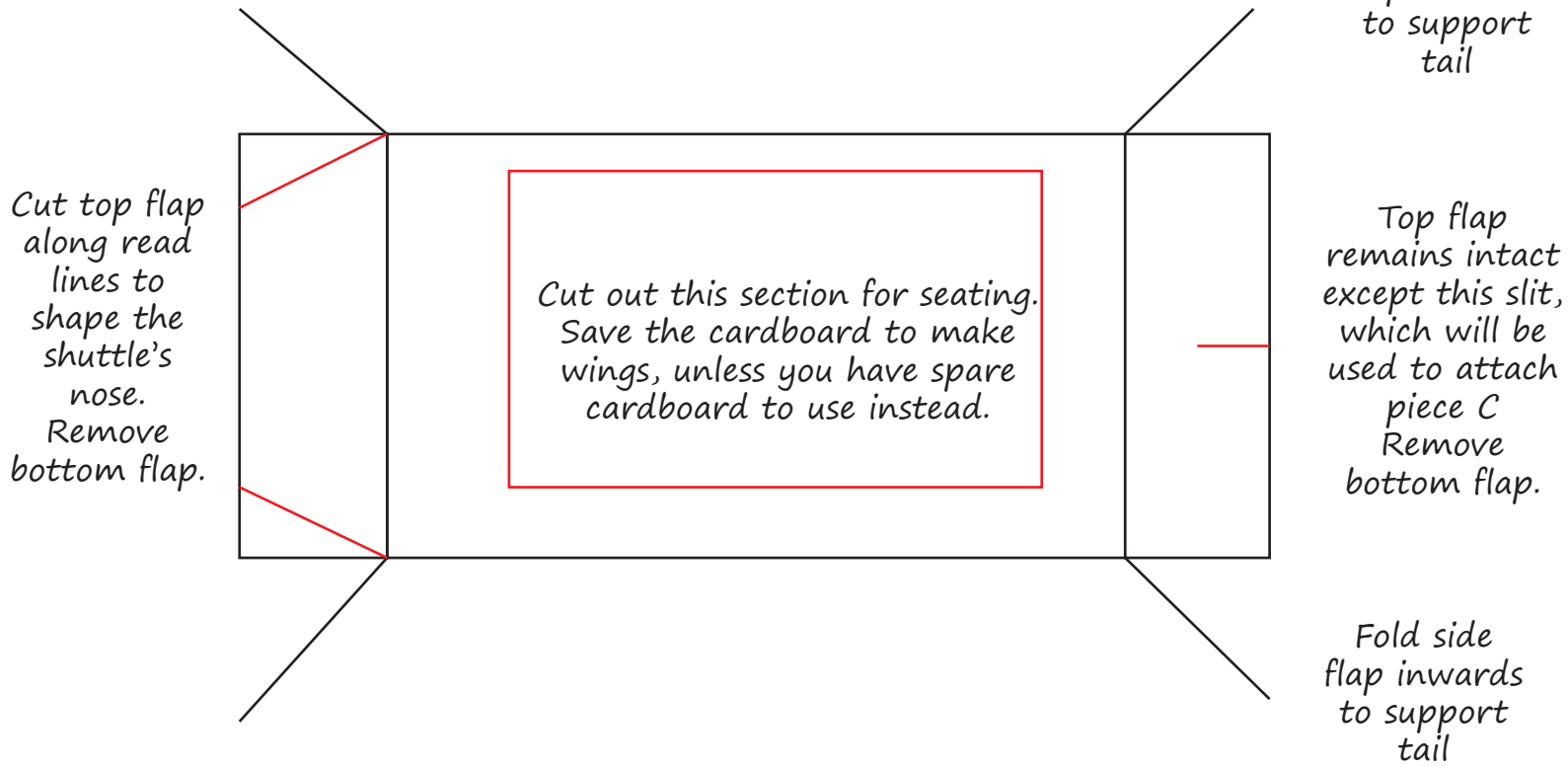
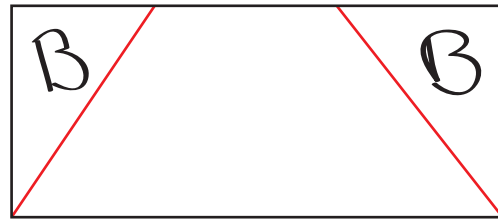


# Cardboard Space Shuttle Tutorial

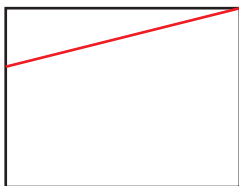
mamasmiles.com



Bottom flap from front of shuttle - cut out a rectangle to attach from the very front of the nose flap to the floor



Bottom flap from back of shuttle - cut out triangles to create the tail of the shuttle.



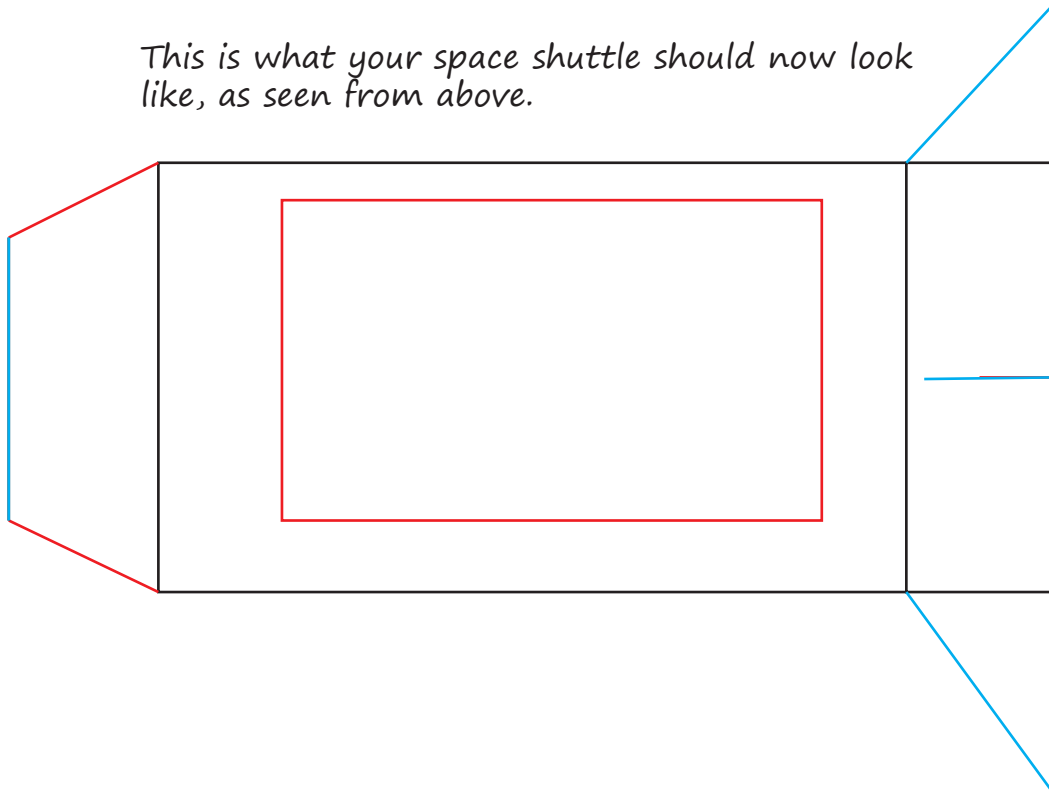
Front flaps - cut so that they angle down slightly on either side, then tape or glue to diagonally-cut edges of front top flap.

# Cardboard Space Shuttle Tutorial

mamasmiles.com

This is what your space shuttle should now look like, as seen from above.

Attach piece A here



Piece B attached to top of rear flap

Piece C slots into place here. Use hot glue to hold it in place

Piece B attached to top of rear flap

Side view of the space shuttle thus far:

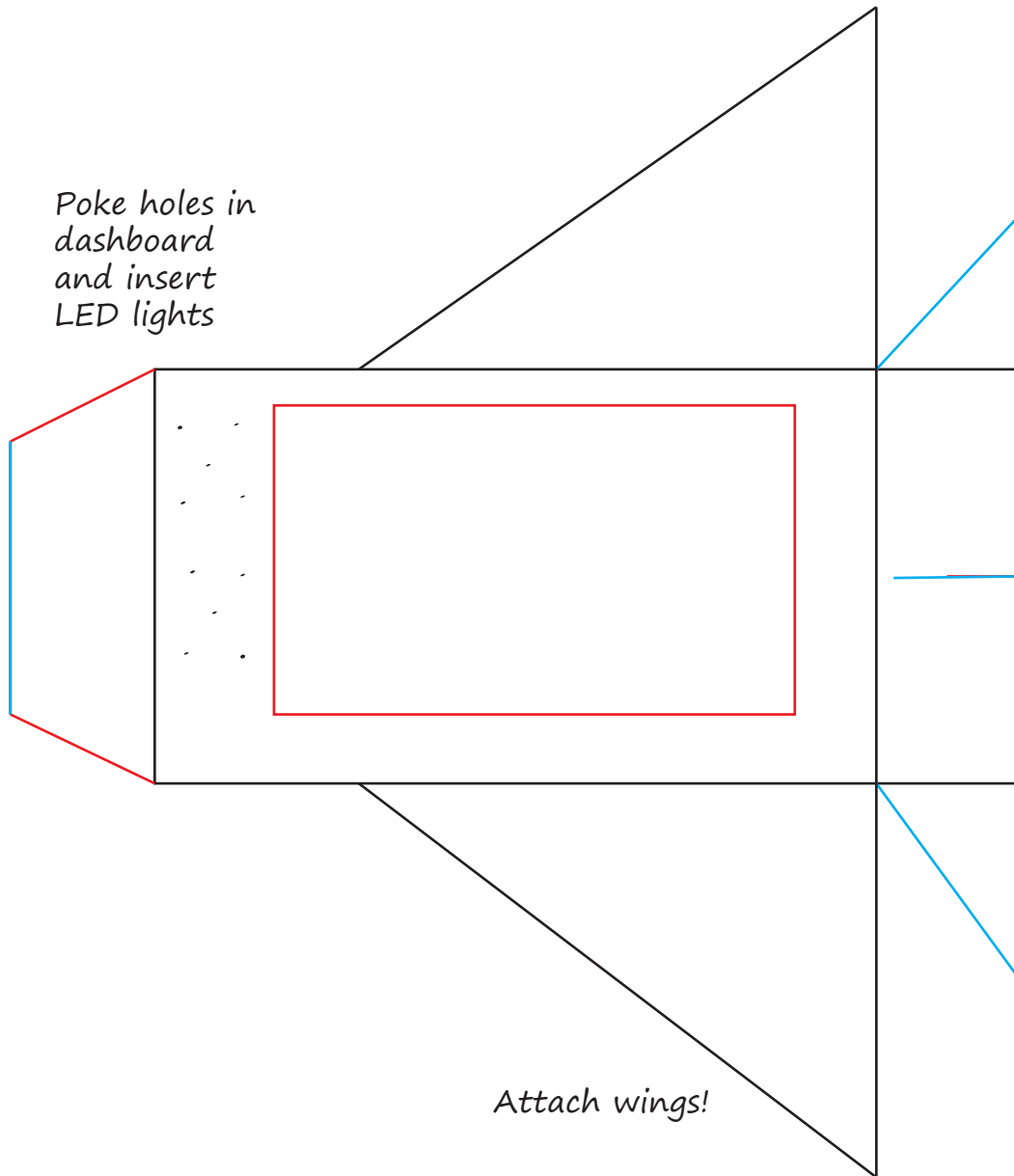
Space shuttle nose angles down and slightly inwards



Lower side flaps angled slightly inwards to stabilize the tail.

# Cardboard Space Shuttle Tutorial

mamasmiles.com



Embark on your first of many space adventures!